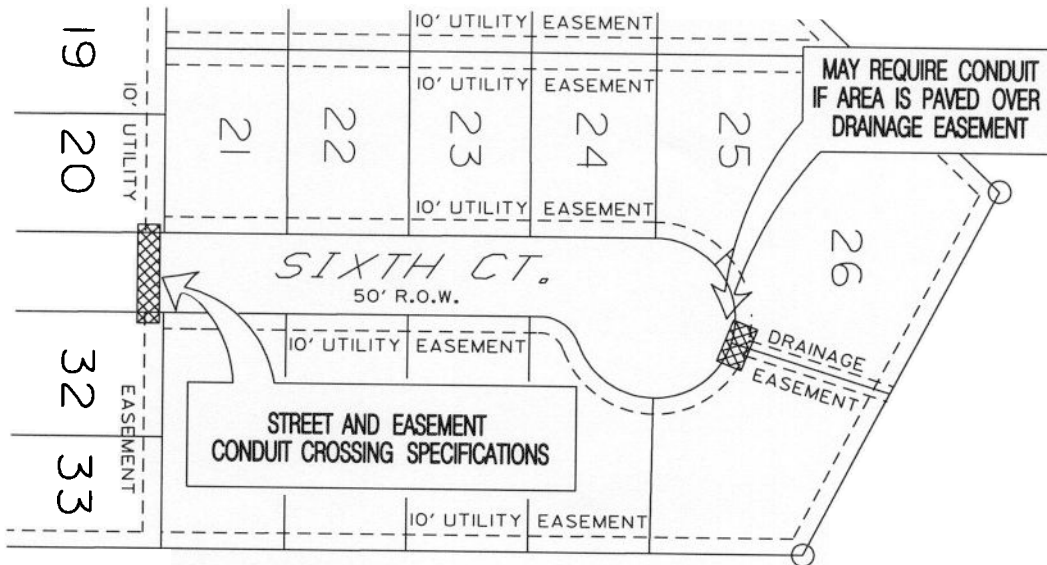


# UNDERGROUND ROAD CROSSING DETAIL



**DEVELOPER OR CONTRACTOR :**  
 INSTALL CONDUIT WITH PULL STRING IN SPECIFIED STREET CROSSING LOCATIONS. PLEASE EXTEND CONDUIT FIVE FEET PAST RIGHT OF WAY WITH TEMPORARY CONDUIT END CAPS. WHEN WATER LINE, GAS LINE, AND SEWER LINE EASEMENTS CROSS ELECTRICAL EASEMENTS, ENCASE CONDUIT IN CONCRETE (- 1' FOOT COVERING). PLEASE EXTEND CONDUIT THREE FEET BEYOND EASEMENTS. PLEASE USE A WOODEN 2X4 OR OTHER VISIBLE UTILITY MARKERS (PVC OR STEEL) TO LOCATE CONDUIT CROSSING ENDS. THE UTILITY MARKERS ARE A MINIMUM OF TWO FEET ABOVE FINAL GRADE.

