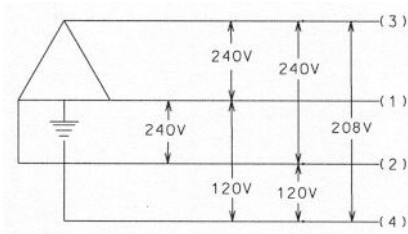
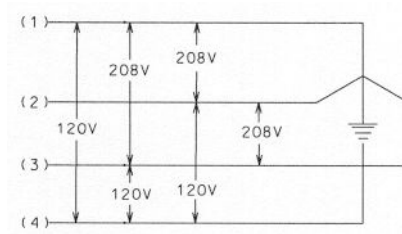


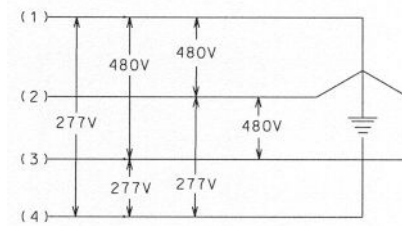
UNDERGROUND 4W 3 PHASE METER BASE 7 TERMINAL METER BASE



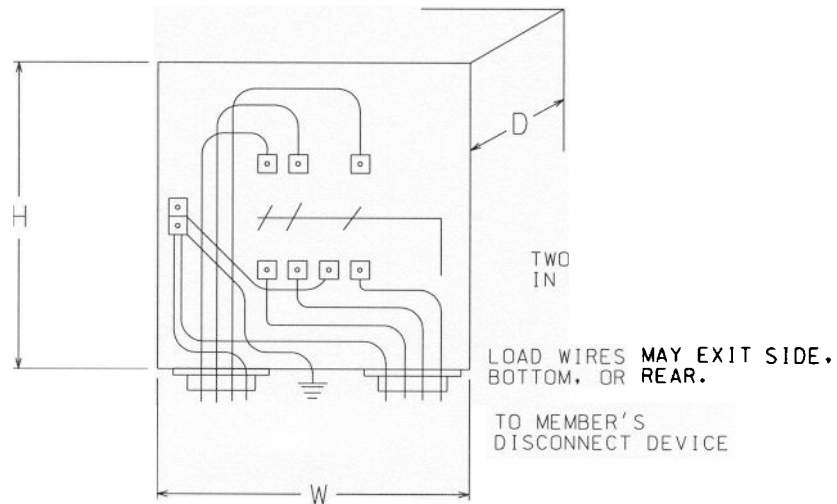
**4W 3 PHASE 120/240 VOLT SERVICE
OVERHEAD TRANSFORMER ONLY WITH
UNDERGROUND SERVICE**



4W 3 PHASE 120/208 VOLT SERVICE



4W 3 PHASE 277/480 VOLT SERVICE



ALL DIMENSIONS
ARE NOMINAL

200 AMPERE METER BASE H=19¹/₄" W=12³/₄" D=5¹/₄"
MAXIMUM WIRE SIZE 350MCM
BYPASS AND JAW RELEASE

320 AMPERE METER BASE H=26¹/₄" W=17³/₄" D=7" HUB=3"
MAXIMUM WIRE SIZE 600MCM
BYPASS AND JAW RELEASE

320 AMPERE METER BASE H=28¹/₄" W=13¹/₂" D=6" HUB=4"
MAXIMUM WIRE SIZE 600MCM
OR PARALLEL 4/0 - 350MCM
PER TERMINAL WITH BYPASS AND JAW RELEASE

NOTE: NO. 6 COPPER- CONTINUOUS GROUND WIRE
FROM METER BASE (CONNECTION "A") TO GROUND ROD.