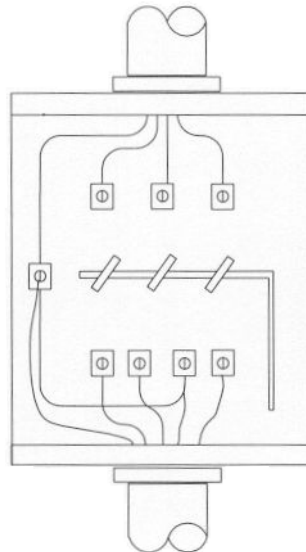
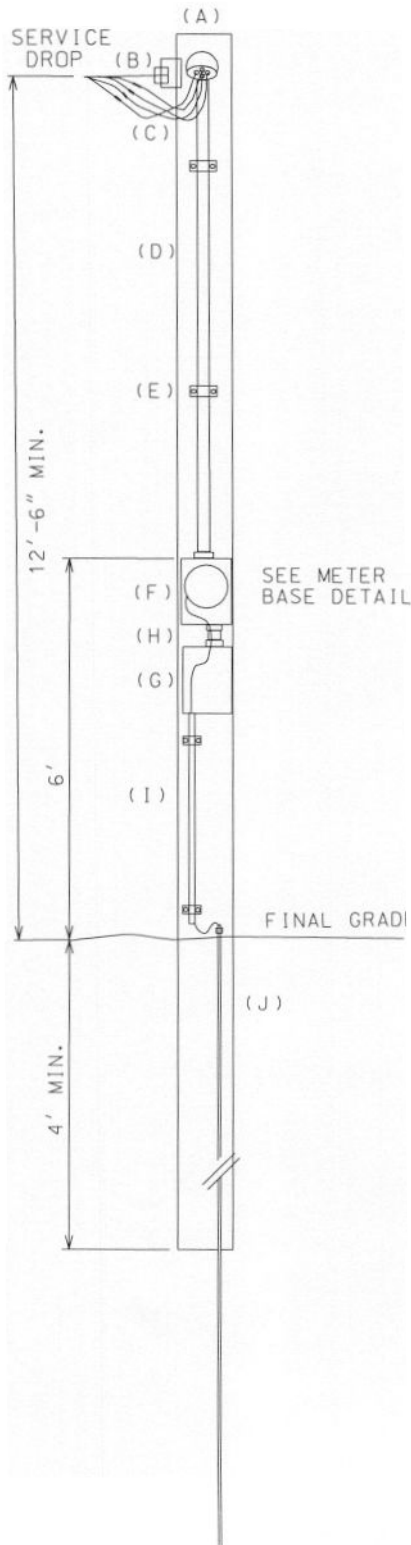


3 PHASE POLE MOUNTED METER INSTALLATION

COOPERATIVE WILL:
FURNISH AND INSTALL METER,
METER BASE AND SERVICE DROP.

MEMBER WILL:
INSTALL METER
BASE FURNISH AND INSTALL
ALL OTHER REQUIRED
MATERIALS. ALL BASES
& DEVICES SHALL BE
BONDED TO GROUND



METER BASE DETAIL

REFER TO PAGE 39
FOR 3W 3 PHASE 240
VOLT OR 480 VOLT
INSTALLATION

REFER TO PAGE 41
FOR 4W DELTA OR
4W WYE INSTALLATION

- (A) POLE SHALL BE 18' CLASS 6 OR 7
- (B) MINIMUM VERTICAL CLEARANCE SHALL BE AS REQUIRED BY NATIONAL ELECTRICAL SAFETY CODE; BUT IN NO CASE LESS THAN 12'-6" (SERVICE ATTACHMENT OR DEADEND BY MVEC)
- (C) WEATHER HEAD AND SERVICE ENTRANCE WIRE; MINIMUM LENGTH 18" AND MINIMUM NO. 6 COPPER OR ALUMINUM. EQUIVALENT
- (D) RISER CONDUIT SIZE IS DEPENDENT UPON ELECTRICAL LOAD AND STRENGTH. SEE ALSO SERVICE ENTRANCE MAST DRAWING
- (E) PIPE CLAMPS - 4' INTERVALS
- (F) METER BASE (SEE METER BASE DETAILS)
- (G) MEMBER'S DISCONNECT
- (H) MINIMUM 2" CLEARANCE BETWEEN ALL ENCLOSURES. MINIMUM WIRE NO. 6 COPPER OR AL. EQUIVALENT
- (I) NON METALLIC CONDUIT OR METALLIC CONDUIT WITH BOTH ENDS BONDED TO GROUND; NO. 6 COPPER GROUNDWIRE- CONTINUOUS FROM METER BASE TO GROUND ROD. (NEC 250-92-B)
- (J) APPROVED GROUNDING ELECTRODE:
5/8" X 8' COPPER WELD GROUND ROD